

Parish of St Modwen

Burton upon Trent



Parish Profile 2023

The historic Parish Church of St Modwen, Burton upon Trent is seeking a House for Duty priest to lead them at this exciting time in their history.

Our present building was re-built between 1719 and 1725 and is, therefore, 300 years old. There is work going on to ensure that the building can provide the parish and local community with a venue for worship and the provision of space for other events for the next 300 years.

We seek a priest who will:-

- Lead us in our traditional style of worship whilst exploring new ways of delivering the gospel.
- Work with the Churchwardens, PCC and Church members to help bring to fruition their future vision for the internal re-ordering and use of the church building as a town centre hub for the wider community.
- Establish and build on existing links with local centres of education, the Burton and South Derbyshire College and our local church primary school to forge greater links with younger people.
- Work with our existing team of active and energetic SSM and retired Clergy.
- Work with East Staffordshire Borough Council to continue our civic roles and their vision for the town centre regeneration.
- Work with and encourage local businesses to develop a Christian presence within the town centre community.
- Work to develop missional working in partnership with Youth for Christ and other groups.

Burton upon Trent - the Town

Burton upon Trent is an ancient town on the River Trent in the East Staffordshire Borough Council local authority.

Burton's origins go back to the foundation of a Benedictine Abbey in 1002 on the banks of the Trent. The town then grew up around the abbey, which dominated the area until the dissolution of the monastery in 1539. The abbey church survived the dissolution and became the parish church of Burton. It eventually became ruinous and was finally demolished in 1718. A new church, the present St. Modwen's, was built on the site of the abbey church and completed in 1726.

Burton has long been famous for its brewing. With the coming of the Trent and Mersey Canal it became possible to export beer all over the world, and in the nineteenth century Burton was very prosperous and full of breweries. It expanded rapidly and the brewing families built a remarkable series of new churches for the town, most of which remain in use.

There is still much brewing in Burton but also a wide variety of light industry. The town's central position and good road links have brought in a lot of warehousing and logistic depots in recent years.

Burton is situated on the Cross-Country rail route with good services to Birmingham and the southwest and to Derby and the north. The town is bypassed by the A38 and lies just south of the A38/A50 interchange by the Toyota factory, so there is easy road access to all parts of the country. East Midlands and Birmingham Airports are within easy reach.

At one time large areas of the town Centre were filled by breweries with extensive maltings and railway sidings. The sites vacated by these have been filled by shopping centres and car parks. Burton has three main covered shopping centres with branches of many national chains; there is a Marks and Spencer, Boots, Wilkinsons and a Waterstones. The National Museum of Brewing is in the town centre.

Burton has a college of further education (Burton and South Derbyshire College) which has recently undergone expansion and development. A new University Wing has been built with links to Nottingham Trent and Wolverhampton Universities. There are several large comprehensive schools in the town, and a variety of primary schools, one of which, Holy Trinity is a Church school linked to St. Modwen's. There are independent schools at nearby Repton, Denstone and Derby.

Burton has its own hospital, The Queen's Hospital, on a site at the edge of the town and is part of the University Hospitals of Derby and Burton NHS Foundation Trust.

The Brewhouse Arts Centre is a venue where art exhibitions and theatre performances are staged, is a short walk from the church.

The town ethnic mix is very diverse with large areas of Asian, Caribbean and Eastern European backgrounds.

The surrounds

Burton has an increasingly successful football team, Burton Albion, which plays in the football league at the Pirelli stadium. St. George's Park, the FA National Football Centre, is just outside the town.

Burton is a pleasant clean town with the remarkable feature of a broad strip of green running right through it, the Trent Washlands. Flooding in the town itself has not been a problem for many years, and much energy has been put into improving the town's flood defences. Although St Modwen's is situated on the banks of the river Trent, it has not been subject to flooding.

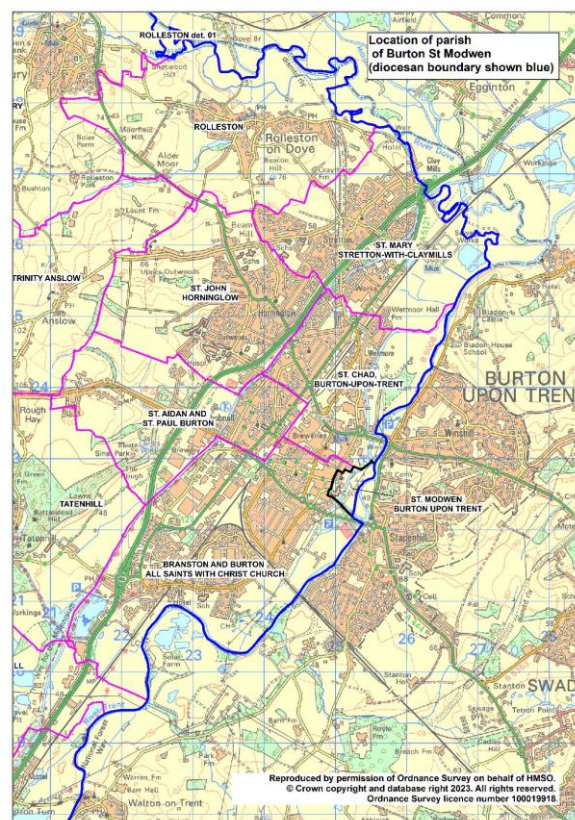
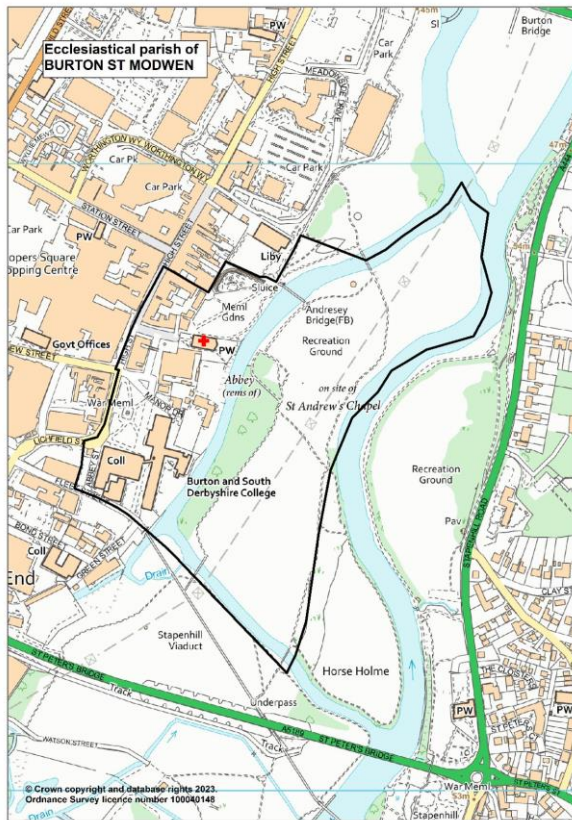
Burton is surrounded by much attractive countryside and lies in the National Forest. It is only a short drive to the Peak District. Dovedale is perhaps forty minutes away. Just a few miles south of the town is the National Memorial Arboretum.



St. Modwen's — the parish.

Boundary changes have left St. Modwen's with hardly any parish. (See map) We can claim only the land between the High Street and the river, and between the college and the library, together with the island in the river. This is not a residential area. There are some shops, a couple of restaurants and cafes. The recently restored Victorian market hall is

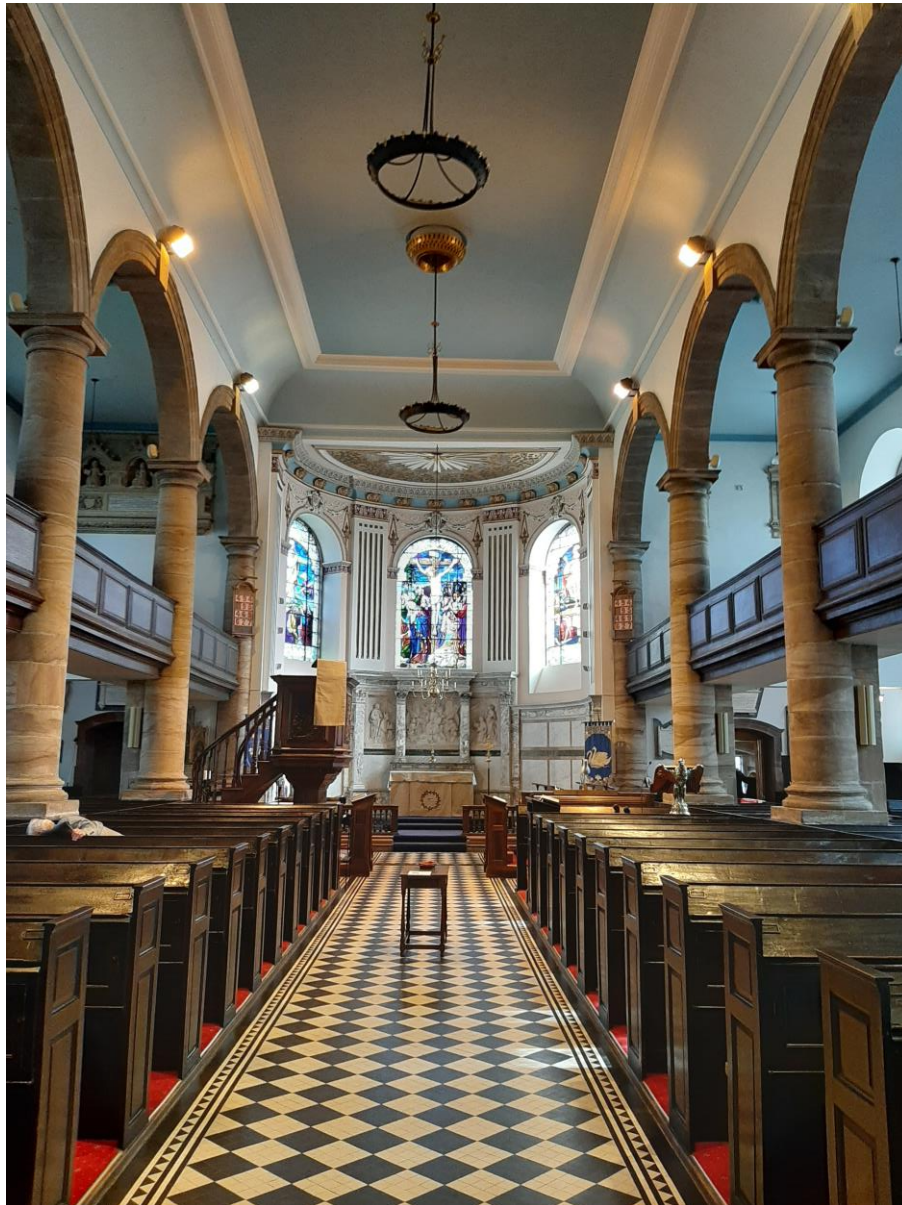
adjacent to St Modwen's and is included in the ESBC/Government regeneration package. Burton and South Derbyshire college of further education along with its University Centre is nearby.



St Modwen's – the building.

St. Modwen's is a fine Grade One listed building standing right in the town centre, in the Market Place. The present building was opened in 1726. It is a large spacious Georgian building which retains its original box pews and galleries. It was designed by William Smith and finished after his death by his more famous brother Francis, "Smith of Warwick". There was some reordering at the east end in the nineteenth century, and eastern vestries were added in 1904.

As a result of a fire in the Vicar's vestry in 1999, causing serious smoke damage to the whole interior of the church, a thorough internal cleaning and redecoration took place. The fabric is now in excellent condition, both externally and internally. No major problems were identified in the recent quinquennial inspection.



St. Modwen's - the congregation.

The congregation has increased over the last few years. It is a gathered group, bound by loyalty to Jesus Christ and the lively fellowship of the church. Most members are from other churches of various traditions and denominations who have found a refuge that suits their churchmanship. We are an interesting group and are keen to welcome others as we ourselves have been welcomed.

Average attendances (before Covid):

Sunday 11am 42

Wednesday 10.45am 8

(Following the lifting of Covid restrictions the number attending is slowly recovering to previous levels)

The electoral role is currently 37.

There is a lively group that provides refreshments on Saturday mornings from 10am to 12 noon. This meets social and spiritual needs for many and brings many visitors into the church. The church opening acts as a safe haven to some who need it and gives an opportunity for a ministry of welcome and witness which we value.

A small group from the congregation keeps the church open and clean.

St. Modwen's —Sunday worship.

The 11am service alternates between Eucharistic and non-eucharistic worship,

The Eucharist is celebrated in a simple Common Worship format, with a service sheet for each season and for special occasions. Vestments are worn; the church has a complete set including three copes. These were bought after the fire, as were a set of laudian frontals for the altar. Two of the older frontals were cleaned and restored and are used. A new set of "best" vestments has recently been given to the church in memoriam of three great congregation members. There are no servers and incense is not used.

The non-eucharistic services are forms of Morning Prayer. On the third Sunday we use the BCP; on the first Sunday we use Common Worship. Services are printed out on seasonal or special occasion sheets. Hymns are sung from Common Praise.

There is an excellent organ, built in 1972 by Hill, Norman and Beard. The case was designed by James Wyatt and was set up in 1771. Our present organist arranges regular mid-week organ recitals given by well-known local and nationally recognised organists. The well-maintained organ is currently undergoing a programme of refurbishment.

Wednesdays

At 10.45am there is a service of Holy Communion from the BCP.



Special Services

Appropriate seasonal services are provided. We held a service of passion readings and hymns on Palm Sunday. We hold a service of morning prayer, solemn intercession and reproaches on Good Friday, and the Easter fire is lit on Easter Day at the 11am service, when baptismal vows are renewed.

We host the Civic Service on Remembrance Day, by far our best attended service, when we welcome the mayor of East Staffordshire and the local MP and other dignitaries and local organisations. Our vicar conducts the service at the town war memorial which follows.

We frequently host the annual mayor — making Civic Service. There is an Advent 'Light up a Life' service for the local St Giles Hospice.

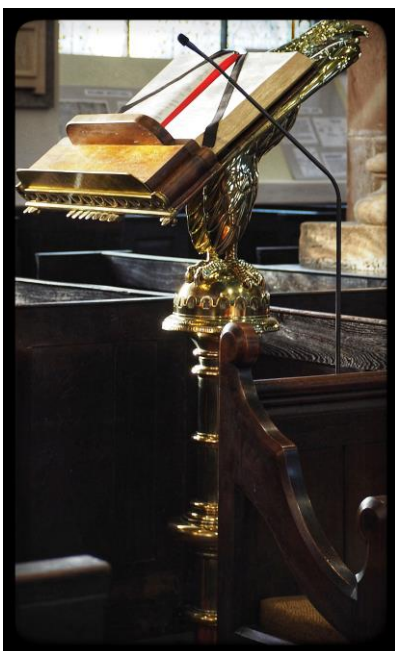
At Christmas, our efforts focus on the service of lessons and carols, held on the Saturday before Christmas involving schools, local businesses and charity organisations. We celebrate our patronal festival in July.



St. Modwen's - social events.

Coffee is served after the service on the first Sunday of the month. Pre covid, on the second Sunday, members of the church lunched together at a nearby restaurant housed in the only remaining building of Burton Abbey. Our June PCC is usually followed by an evening garden party for all church members. The congregation lunches together following the Easter and Harvest festivals.

When the church is open on Saturday mornings members of the congregation are available to listen to people who visit the church, to talk to them and to pray with them. A votive stand is provided with candles to be lit to assist with prayer. In addition, a lively ministry of welcome exists on Saturdays in the kitchen. Our excellent coffee is renowned, and good value, and its quality has caused some visiting clergy to doubt if we really are C of E! Saturday mornings also allow a regular collection of food for the YMCA food bank. St Modwen's has strong links with the YMCA which it supports with regular donations.



St. Modwen's — ministry.

St. Modwen's has an Assistant Minister (self-supporting), Dr. Robin Trotter. For some years our Lay Reader (licensed in 1990), he was ordained priest in 2019. He has taken the majority of the services (i.e., all the non-eucharists) during the lengthy interregnum. We have also had excellent support from some retired clergy who are willing and happy to join us from time to time. One of our congregation is a member of the hospital chaplain's visiting team. Two members of the congregation have led intercessions at the service of modern morning prayer, and many are on the Rota for reading the lessons.

St. Modwen's — finance.

St. Modwen's finances are sound. We are fully up to date with our parish share payments and pay our way. We have reserves available. The PCC has always been clear that the first charge to our income is giving, and we make regular contributions to several charities.

Holy Trinity School



Holy Trinity is an active Church of England primary school with strong links with St. Modwen's. The school has received both good and highly complimentary reports following recent inspections. The incumbent is a Foundation Governor along with two others from the congregation. Regular assemblies following the church calendar are led by the clergy. Art projects, relevant to the church calendar and historic aspects of the area are regularly undertaken by the children in cooperation with the staff along with one of the Church Wardens. The results are displayed in the church.

Re-ordering

The PCC has sanctioned active investigations into a process of re-ordering which involves creating space at the eastern end of the nave and the dividing off a social and meeting area at the western end of the nave. Also included would be a dedicated kitchen area for serving light refreshments. The creation of more toilet facilities is also being explored.

The finance will be covered partially by invested reserves created by the sale, many years ago, of a meeting hall in Friars Walk nearby. Other finance has been provisionally agreed by a local business. The planning is in the early stages and a firm of architects, with a good reputation for work in historic churches, has been commissioned to prepare preliminary plans and a formal faculty application has been submitted. The local authority is aware of our aspirations and, although not formally part of the town regeneration package, St Modwen's as a town centre and civic church will be part of the upgrading of the area around the Market Place.

The Vicarage

St Modwen's does not currently have its own Vicarage. Housing will be provided in the nearby All Saints House, 242 Blackpool Street, Burton-on-Trent, DE14 3AU, 1 mile from St Modwen's Church (5 minutes drive, 15 minutes walk).



Built in 1971 the property is a modern detached house with a single detached garage. There are reasonable sized front and rear gardens all laid to lawn.

The study can be accessed from the entrance lobby as well as the staircase hall.

Ground Floor: Entrance Lobby, Staircase Hall, Living Room, Dining Room (3688 x 4271 x 2485(h) mm), Kitchen, Pantry (off kitchen), Utility, Boiler Cupboard (off utility), Downstairs WC, Study (3945 x 4539 x 2487(h) mm)

First Floor: Landing, Bedroom 1 (double, front, right hand side) (3960 x 3650 x 2469(h) mm), Bedroom 2 (single, front, middle) (2775 x 3391 mm), Bedroom 3 (double, front, left hand side) (3373 x 4549 mm), Bedroom 4 (double, rear, left hand side) (3566 x 3536 mm), Bedroom 5 (single, rear, middle) (1905 x 3407 mm), Airing Cupboard, Separate WC, Bathroom

Outside: Garage & Attached Garden Store (Internal clear dimensions 2767(w) x 5800(l) mm)

There is a single, freestanding garage located to the right hand side of the house. It was of brick with a felt covered flat roof. There is also a brick built garden store attached to the rear of the garage.

The drive and parking area, measure approximately 11 x 6.5 m .

