



The Church of England
around Staffordshire, northern
Shropshire and the Black Country



Curacy in the Diocese of Lichfield



**Title post in the
Bishops Mission Order
of Telford**
(Telford
Minster)



**Pioneer / plant |
charismatic-evangelical**

Bishops Mission Order / Church
Planting and Pioneering

Welcome to Lichfield Diocese



Come follow Christ
in the footsteps of St Chad

Cradled at the intersection of the Midlands and the North, and the interface between England and Wales, the Diocese of Lichfield is the ancient centre of Christianity in what was the Kingdom of Mercia.

We are rightfully grateful for the inheritance we have from St Chad that leads us to focus on Discipleship, Vocation and Evangelism as we live and serve among the communities of Staffordshire, northern Shropshire and the Black Country.

Wherever in the Diocese you may be placed, you will benefit from being part of a wider family, mixing with people serving in a wide variety of contexts – from the grittiest inner-city neighbourhoods of Stoke and the Black Country, to the leafiest rural parishes of Staffordshire and

Shropshire, to the sparsest upland communities of the Staffordshire Moorlands and Welsh Borders.

And we embrace the widest spectrum of church traditions – evangelical and catholic, liberal and conservative, choral and charismatic, as we journey together – as a colleague recently put it, it is our goal to be a ‘spacious and gracious diocese’.

‘...a spacious and gracious diocese.’

It is my determination and that of my fellow-bishops that your calling to a title post will be a time of encouragement, ongoing formation, challenge and (while rarely unbridled) joy. Our colleagues among the Diocesan staff keenly bring their various specialisms both spiritual and practical to serve our parishes, fresh expressions, schools and chaplaincies.

+ Rt Revd Dr Michael Igrave
Bishop of Lichfield

As we follow Christ in the footsteps of St Chad, we pray that the two million people in our diocese encounter a Church that is confident in the gospel, knows and loves its communities, and is excited to find God already at work in the world. We pray for a church that reflects the richness and variety of those communities. We pray for a Church that partners with others in seeking the common good, working for justice as a people of hope.
(Diocesan Vision Statement)

A caring diocese

Lichfield Diocese is one of the largest in the country, covering an area of 1744 square miles and serving a population of more than 2 million.

The Diocese consists of three episcopal areas with three Area Bishops (of Wolverhampton, Stafford and Shrewsbury) ministering alongside the Diocesan Bishop, each overseeing a different geographic area. This indicates the Diocese's commitment to its different contexts, and to the pastoral care of our clergy.

Homes and schools

We aim to provide high quality housing for our clergy with a continuous programme of improvements to houses and responsive, specialist contractors for emergencies.

As well as the 208 Church of England schools in the Diocese, there are many good schools and colleges that will welcome clergy' children, and a number of

higher education centres can be found in Stoke, Keele, Stafford, Shrewsbury, Telford, Wolverhampton and Walsall.

Vocation and mission of all

Our vision for the Diocese is that all people, lay and ordained alike, will grow ever more deeply into their vocation as disciples of Christ. We hope to become a Church where all our members are equipped to know they are called by God to

worship and to be the eyes, hands, feet and mouth of Christ in their own contexts.

To further these aims, and to develop creative patterns of ministry, we ask all training parishes to offer 'sixth-day' opportunities for curates – which might be a chaplaincy attachment (school, hospital, prison or

hospice), involvement with local gardening ventures, night-shelter involvement – to mention just a few possibilities.



"Our time as a family in my curacy in rural Shropshire has been one of the best of our lives. I've learned that the priestly role is vital in the community. I'm particularly enjoying working with seniors, and enabling the giftings of others which resulted in a successful Messy Church starting in one of the villages. I give thanks to God for this special time, and for everyone who's been there for me and supported me throughout."

Revd Jassica Castillo-Burley

The Archdeaconries of Lichfield Diocese



Everything but the sea



David Rayner (Wikipedia) / Stoke-on-Trent Bottle Kiln / [CC BY-SA 2.0](#)

Staffordshire prides itself on being 'the Creative County': Shropshire is the birthplace of the Industrial Revolution and the Black Country is renowned for its industry and all have significant opportunities for spouses who wish to develop careers in any sphere.

For those days off when you need space away from the parish, the area has everything you could wish for – except the sea: wild landscapes, cultured museums and stately homes. Sports of many kinds (including Premiership football) and at least two theme parks

Shrewsbury Flax Mill – the prototype skyscraper / Tk420 (Wikipedia) / [CC BY-SA 4.0](#)



Opening of the Lighthouse Project at Kingsland CE Academy, Bucknall



Road and rail links



For those with family and friends in other parts of the country, the Diocese has great transport links: the M6/M6Toll bisects the centre of the Diocese north-south, and the M5 originates at our southern tip. Heading west, the A5/M54 give easy access to north and mid Wales, while the A50, A5 and M6Toll give swift access to the M1, M42 and A38 for the East Midlands and the south-east.

Rail links are also good with all major towns having direct services to London and Birmingham and four major airports surround our borders – Birmingham, East Midlands, Manchester and Liverpool.



Dovedale (location of one of the Diocese's two residential retreat centres) / Shaun Dunmall (wikipedia) / CC BY-SA 2.0

Leisure and pleasure

Lichfield Diocese has everything but the sea. For walkers and climbers, there's an extensive network of canals, Cannock Chase, The Roaches, and the Shropshire—Welsh borders (for example). If you're into more organised fun, Alton Towers and Drayton Manor Theme Park can provide it. And then there's

Wightwick Manor nr Wolverhampton / Tony Hisgett (Wikipedia) / CC BY-SA 4.0



many museums including Walsall's New Art Gallery and the RAF museum at Cosford; not to mention excellent sporting options for both watching and participating – from premiership football to the Tamworth Snowdome. Along with Wedgwood, theatres and cinemas, restaurants and superb tea shops just begging to be discovered...



Apedale Valley Light Railway nr Stoke is one of many transport and leisure museums in the Diocese / Simon Jones

If shopping is your thing, there is a range of options, from the chic boutiques at Barton Marina, and Shrewsbury to large malls in or near the urban centres. We're fortunate in being the home of many fine ales and beers brewed in Burton on Trent (the museum is well worth a visit), and Staffordshire oatcakes are a unique local delicacy to be discovered.



Wulfrun Centre in Wolverhampton is one of many shopping destinations in the region © Roger Kidd -/ geograph.org.uk/p/1171894/ CC BY 2.0

Alton Towers near Uttoxeter Jeremy Thompson/Flickr / CC BY 2.0



Telford Minster BMO



Public art in Telford Civic Centre
cc-by-sa/2.0 - © Jeremy Bolwell -
geograph.org.uk/p/5899052



- Telford is in Shropshire, halfway between Wolverhampton and Shrewsbury.
- Telford is a real mix between post industrial, sub-urban, urban, and UPA (Urban priority area).
- Telford is a large town of 178,000 people of which the BMO covers the entire number. Telford is disproportionately young with 25% British spanning the socio-economic spectrum.
- Telford is a fairly unique place with some beautiful wilderness areas and a UNESCO world heritage site. It also has some areas that are gritty and rough. With some large areas of poverty but also real wealth.
- Telford is a new town in the UK, 50 years old it is comprised of old Telford people who wouldn't see themselves as Telford but rather their own individual communities. People who moved to Telford for a 'better life' out of Manchester, Liverpool, Birmingham, Stoke, Wolverhampton and Leeds mainly comprising of the urban poor of those areas. Most recently people looking for a place to call home and to bring up a family away from busy urban areas but still connected by good road and rail links. Telford defines itself as not Shrewsbury, with a huge sense of rivalry.
- The main industries are light industrial and manufacturing, as well as support industries such as Insurance and call centres. There are a significant number of small businesses who start in Telford.
- Telford has everything anyone could want, with outstanding schools, great restaurants, a huge shopping centre, a large award winning town park with an exotic zoo, climbing and high ropes courses and a plethora of activities for all ages.
- A recent study of Telford has shown less than 1000 people in any church denomination are actively involved in being church. This is the reason for the Diocese of Lichfield in partnership with Hereford Diocese, and the church commissioners have planted Telford Minster, to be a resource church for both diocese, and for the Shrewsbury episcopal area.

Services in the churches:

We meet as a church at 4pm on a Sunday afternoon usually for an hour and a half, to Worship in song, hear the scriptures read and expounded, and to pray. We also usually eat a meal together, and have prayer ministry at each service. We are aiming to plant over the next 6 years up to 10 missional communities across Telford in areas where there is no or little church presence.



We are in the process of a large scale building project funded by the Church commissioners under the Strategic Development Fund (SDF) and Lichfield Diocese. The Minster building will also serve as a Diocesan resource for the Shrewsbury Episcopal area, and may hold ordinations, diocesan training, Bishops council, diocesan synod, and other key meetings in the life of the wider diocese and deanery.



Our outcomes under the SDF funding structures is to grow a church of over 300+ in 6 years and to plant 10 missional communities, some of these are to be youth communities and fresh expressions of Church under lay leadership. We are going to be disproportionately focusing on the under forties demographics, Schools, Children, and Youth. We are also wanting to resource the wider Telford area (covering 5 deaneries -3 Lichfield diocese, 2 Hereford diocese).

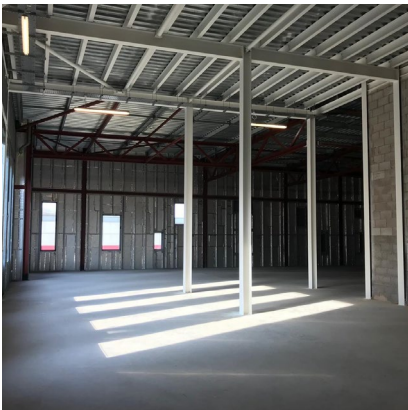
Our aim is to reimagine church for 20 years' time by listening prophetically to what the Holy Spirit is

Telford Minster BMO



saying as well as reaching out in new ways of evangelism and mission that may not have been seen yet. We are partnering with the New Wine family and are investing heavily in their work of local churches changing nations in Telford and Shropshire.

We are determined not to fall into the current ways to being church but to be a pioneer and fresh expression of church in Telford.



A large, upstairs space at Meeting Point House has been identified as an excellent venue for the gathered church to meet. A lease is being negotiated and architects have been engaged to develop plans for the space, which currently is a newly-built shell. The venue is a first-floor extension which was added recently as part of a deal between Telford & Wrekin Council and Meeting Point House. Meeting Point House (meetingpointhouse.co.uk/) is a large town centre venue run by an ecumenical charity.



Parts of the building have recently been redeveloped. The first floor area visible across the photograph (left) is the newly built space which would be the home for Telford Minster Church.

Inside, a large area offers many possibilities for worship, meeting, training and other activities. This area would be the heart of the newly formed Telford Minster Church.

Your Training Incumbent



Revd Matt Beer

95 Ernest Dawes Avenue, Priorslee, Telford, TF2 9XA

- Trained: Ridley Hall Cambridge
- Ordained: 2016, Oxford Diocese
- Curacy: St Mary's Bletchley
- Leader of Telford Minster BMO since October 2019

Matt is a passionate leader who is chasing after the things the Lord has for Telford and the Nation. Matt has run Venues at the New Wine National gatherings over the last 10 years and most recently the Arena, a 5600 seater venue mainly for adults. Matt is passionate about bringing the gospel to

younger people and seeing lives changed by Jesus. He is also married to Emily who is a research scientist in Birmingham. They have a very energetic spaniel called Zach.

Matt worked as a youth worker in Abingdon in Oxfordshire and has been a Teacher. He is an avid gardener and enjoys being outdoors and exploring the countryside.

Telford Minster is a unique chance for a curate to explore their ministry in a staff team that is permission giving and open to change and new ideas. Matt is a leader who is willing to release people into their callings and see people raised up. There is an opportunity for a curate to lead and preach regularly, as well as lead fresh expressions of church in varied contexts. Matt also leads the Shropshire New Wine network.

The Context

Telford is a lovely place to get to grips with ordained ministry and has a mix of traditional church and more fresh expressions. The town also has a number of huge new housing developments one of which has 16000 new homes. Telford was hit particularly badly by the 2009 financial crises and as a result has very few community spaces, little to no secular children's and youth work, and has a



Telford Minster BMO

growing mental ill health epidemic. There are some huge positives in Telford too. Friendly people who are open to community and to the work of the Gospel. A thriving town centre that draws people in from 70 miles away, natural scenery that is picture postcard.

We are a forming church which was planted in November 2019 with 3 people and are now a thriving community. We hold reading and wrestling with the Bible, becoming a community that loves each other and are committed to bringing out the best in each other, eating food and sharing life, the Sacraments, and Worship and prayer, all undermined and permeated by the life and renewal of the Holy Spirit to be the core of our church.



We're really grateful for all the support we got from the Diocese, starting with the DDO, who went out of her way to help in finding a good match, and to work out practical matters.

My vicar has been very supportive, through planning carefully together and weekly supervisions, where we reflect on different areas of ministry. I have been given new challenges progressively, all done sensitively and fitted to the stage I was at. Our churches have been so welcoming to the whole family, and very supportive of my ministry, even when this involves less regular ideas, like planting a tree during a sermon (only in a pot, I regret to say!).

Revd John Beswick Pallister

The Ministry

A Curate at Telford Minster may not receive a normal curacy because of the nature of a Bishops mission order. But they will receive a great deal of experience of mission and evangelism, from social action to prayer ministry on the streets, from street preaching to hosting Alpha courses.

A curate would receive the experience of leading their own expression of church from conception to delivery, as well as handing on the reigns to someone they have developed into leadership.

A curate would also be involved in leading services and preaching regularly as well as leading prayer ministry. They will also be involved in hosting New Wine training days at Telford Minster and speaking away at other more traditional services.

Schools work and chaplaincy will be a key role for all the Staff of Telford Minster including a curate in training. There will be occasional offices to conduct as well as starting up new and exciting ministries.

There is so much a curate might learn if they are up for dreaming about what could be. A curate would be involved in strategic thinking and would be a key member of the Minster staff team as well as sitting on the vision team for the minster (PCC equivalent).

Apart from being a New Wine plant, we are partnering with Resource <https://www.resource-arm.net> and IJM (International Justice ministry) <https://www.ijmuk.org> alongside these we would hope a curate to lead a international mission trip with SOMA <https://soma.uk.org>.

Telford Minster has a large Staff team to resource Telford and Shropshire, Leader, Associate, Operations Manager, Youth Pastor, Children and Schools Pastor, Worship and Media Pastor, and will in time have a Curate, and an Assistant Youth Pastor.

The vision team has 11 people who range from an Archdeacon, to those involved in national and international ministries but all are passionate about seeing Telford awakened by Jesus into its calling.

As a BMO we are held accountable to a diocesan project board, consisting of... Diocesan Secretary/CEO Julie Jones, Area Bishop Sarah Bullock, Archdeacon of Salop Paul Thomas, as well as key diocesan staff, Finance, Mission, fresh expressions, communications. The BMO is given by the Diocesan Bishop Michael Ipgrave in partnership and consultation with the Bishop of Hereford.

The SDF and diocesan strategy can be requested by anyone exploring this curacy.

Housing and Accommodation

The Diocese of Lichfield either has a curate's house in the benefice or a 'strategic' house for curates in close proximity of the benefice. These are good houses, mainly with four bedrooms. If there is no curate's house in the benefice and where such a strategic property exists within easy reach of the proposed training parish this will be the preferred curate's house. If there is no strategic housing available nearby the diocese is committed to providing appropriate accommodation for all those entering ministry. We generally do not offer rented accommodation except as an emergency short term measure. Our curates can be confident that their home will be of a consistently high standard. If you wish to know further details about the house, the DDO will be able to provide you with more information.



Worship area visual

Some Figures

- From October 2019 - April 2020
- Growth from 3 to 45 people
- 4 people new to faith
- 8 funerals
- Under a BMO there is no Electoral roll

Curacy in Lichfield Diocese

Supporting learning and formation

Curate learning, formation and development is strongly valued and affirmed in Lichfield Diocese. Curates receive ongoing supervision and reflection on ministry in the parish, complemented by our curate-training programme in which you share with your year-group of peers. The aim of the training programme is to enable each person to flourish in their ministry and inhabit more deeply their vocation as deacons and priests. This programme supports learning and formation through a partnership between the Diocese and The Queen's Foundation. And it takes place in the context of parish supervision and reflection on ministry.

The programme provides space and an environment beyond the parish context in which curates come together with skilled tutors to learn with and from each other's shared experience, so that they can better integrate their practice and reflection, develop their personal qualities, spiritual, ministerial and professional gifts and skills, and deepen their desire to learn.



The curacy experience is very much a collective one, often gathering at Lichfield Diocese's centrally-located Shallowford House for study, prayer, retreat and de-stressing with peers: as such, it's a much less scary venue during IME2 than as a base for a BAP!

Pattern of training

The programme focuses on grounded and situated learning and prioritises the Diocese's focus on Discipleship, Vocation and Evangelism:

- In Year 1 establishing you in your new ministerial context and practice, and supporting your preparation for ordination as priest.
- In Year 2, deepening your practice and understanding of mission and ministry with the theological tools and skills you need to contextualise this.
- In Year 3 helping you prepare for life-long ministry and to take up a post of responsibility to be entered into with skill and confidence.



IME2 to equip for ministry

At the heart of the programme are residential events which bring together a year-group of curates. They reflect the diversity of the Church, while the different ministry contexts reflect the diversity of the Diocese. This cohort is the primary context for the essential learning and formation to develop your ministries, focusing on ministerial formation, and on the development of relationships which enable mutual flourishing for all.

Opportunities for academic awards

Alongside the IME2 training you may wish to continue studying on an accredited pathway with Common Awards. Curates who already have a Diploma award from IME1 may register for a BA in Theology, Ministry and Mission. Others who already have a degree or higher award or are recognised as potential theological educators have opportunities to further their studies alongside their curate programme.



Many second year curates have the opportunity to grow through visits to our link dioceses in Canada, Africa, or Germany— this group enjoying a day on safari.

Care for curates and families

The wellbeing of clergy and their families is very important to us. In addition to the supervisory aspects to curacy, we have a free, confidential counselling service (*the Listening Ear* scheme) for all clergy, diocesan staff and their families.

More info

– contact the DDO (details on back cover) or visit Lichfield.anglican.org/curacy

"We have had amazing support from the diocese over the past 6 years through both of our curacies and that's not always been straightforward- particularly when 'life' sometimes gets in the way!

"But the support, through thick and thin has been fantastic, particularly discerning Adam's call to pioneering ministry and curacy under 'pioneer' supervision."

Revds Adam & Charlotte Gompertz



Curacy in Lichfield Diocese

For further information

In the first instance, please contact:

The Revd Romita Shrisunder,

Bishops' Director of Ordinands

01543 306220 [O]

07949 033091 [M]

E-mail: romita.shrisunder@lichfield.anglican.org

Find us on:

ACHurchNearYou:

<https://www.achurchnearyou.com/church/33238/>

Facebook:

<https://www.facebook.com/telfordminster/>

Instagram:

<https://www.instagram.com/telfordminster/>

You Tube:

<https://www.youtube.com/channel/UCOVr5fqEPq9A6CXczfpLzuA>

Telford Minster

Making Jesus Known

*A new intergenerational church
reaching people outside of church and
making new disciples of Christ*

